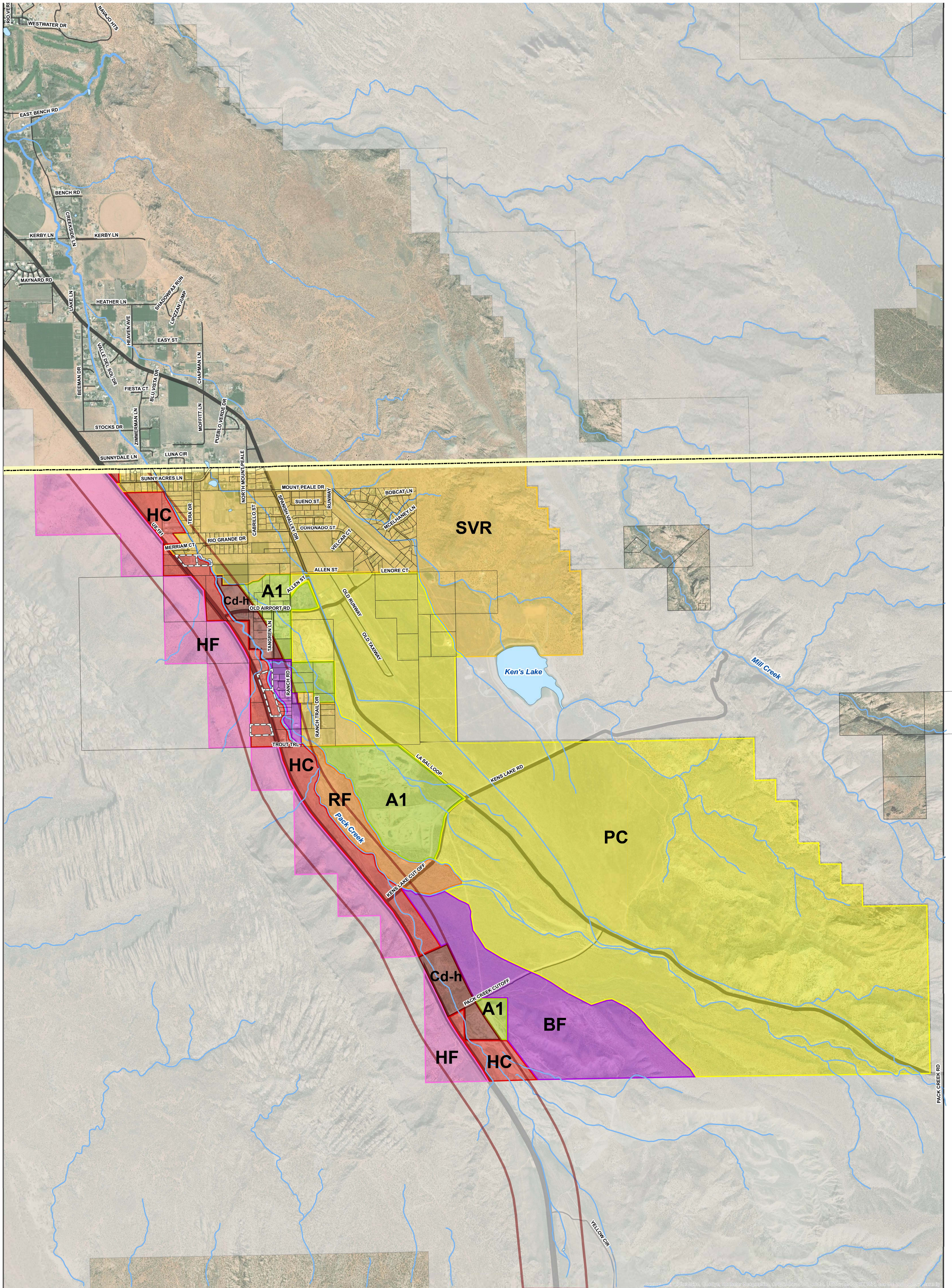


# Spanish Valley Zoning - as Adopted on November 19, 2019



- |                                  |                                       |   |                 |
|----------------------------------|---------------------------------------|---|-----------------|
| Planned Community (PC)           | Business Flex (BF)                    | Known Existing Overnight Accomodation           | County Boundary |
| Spanish Valley Residential (SVR) | Highway Flex (HF)                     | Historic Cd-h Boundary (1000' from Center Line) | Rivers/Streams  |
| Residential Flex (RF)            | Highway Commercial (HC)               | BLM Land  | Roads           |
| Agricultural (A1)*               | Controlled District - Highway (Cd-h)* |   |                 |

\*Disclaimer - Known properties with sand and gravel deposits/operations retain existing zoning per Utah code 17-41-402. Other properties that may exist are subject to the same code.