

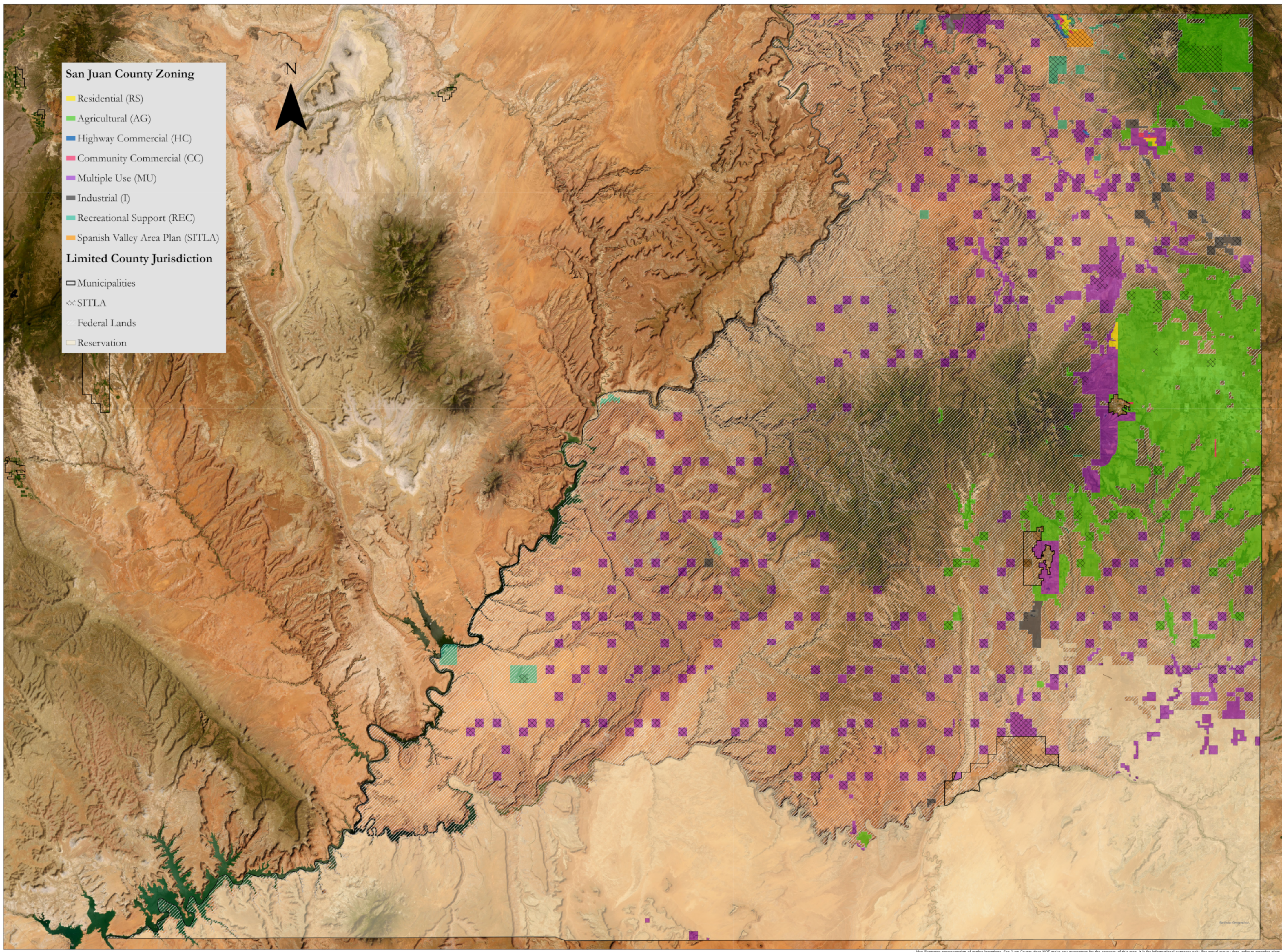
San Juan County Zoning

- Residential (RS)
- Agricultural (AG)
- Highway Commercial (HC)
- Community Commercial (CC)
- Multiple Use (MU)
- Industrial (I)
- Recreational Support (REC)
- Spanish Valley Area Plan (SITLA)

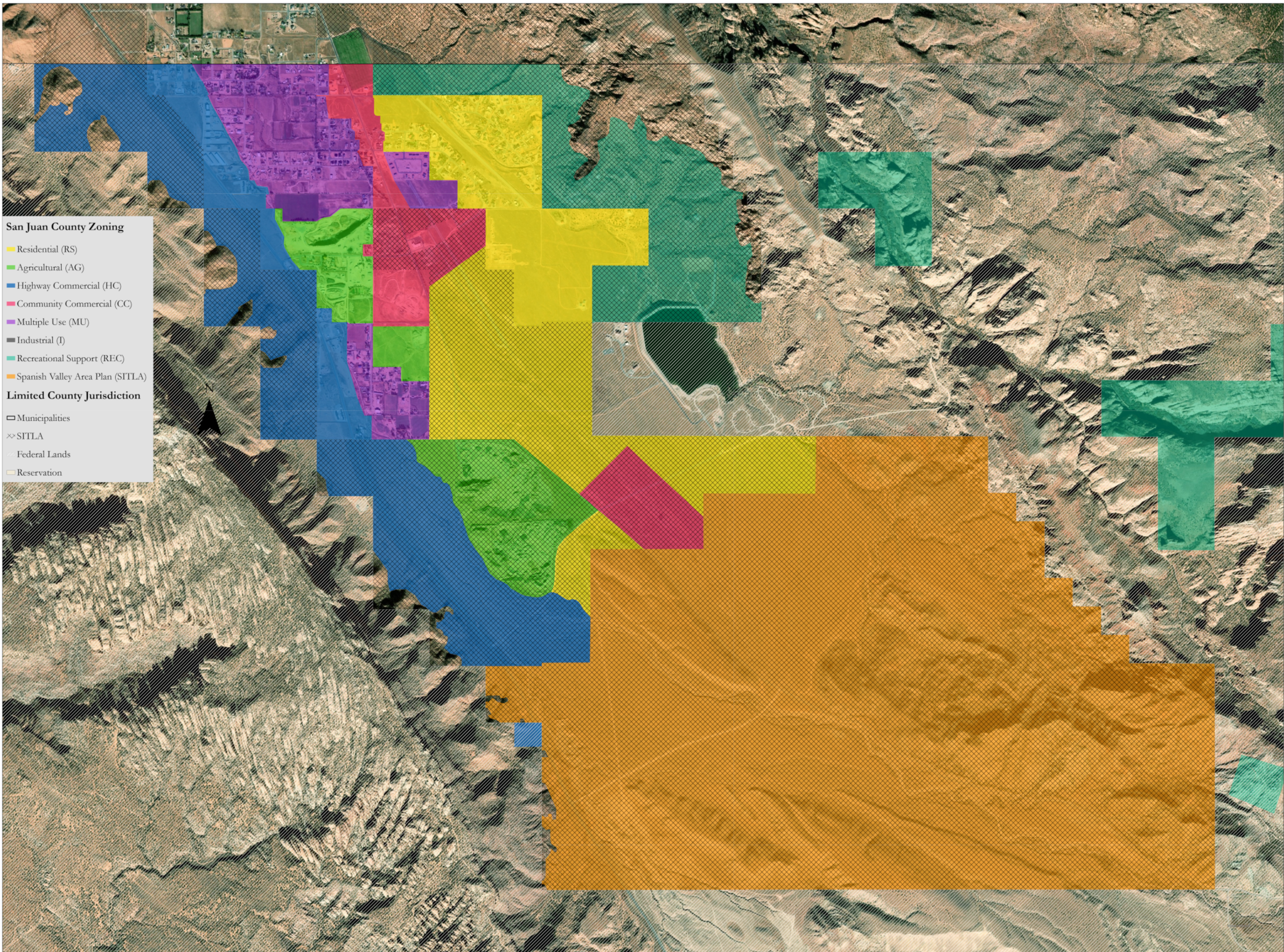
Limited County Jurisdiction

- Municipalities
- SITLA
- Federal Lands
- Reservation

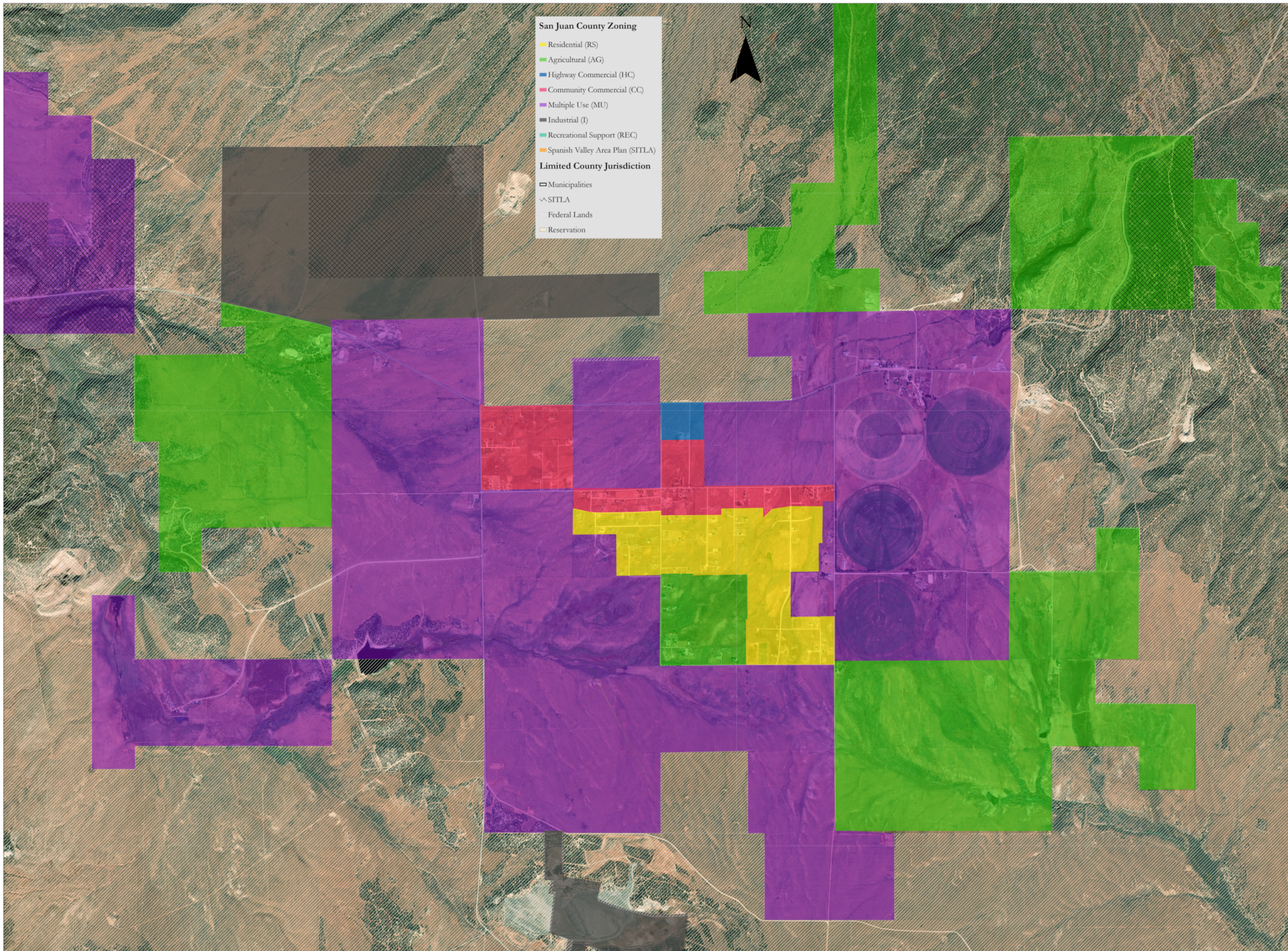
N



- Map illustrates representation of zoning intentions. San Juan County does NOT make any guarantees for the accuracy of this map, it is for informational purposes only. For actual survey data, refer to recorded plats.
- Map is property of and maintained by San Juan County
- Imagery is property of and courtesy of Earthstar Geographics



*Map illustrates representation of zoning territories. San Juan County does NOT make any guarantees for the accuracy of this map, it is for informational purposes only. For actual survey data, refer to recorded plans.
 **Map is property of and maintained by San Juan County
 †Map is property of and owned by State



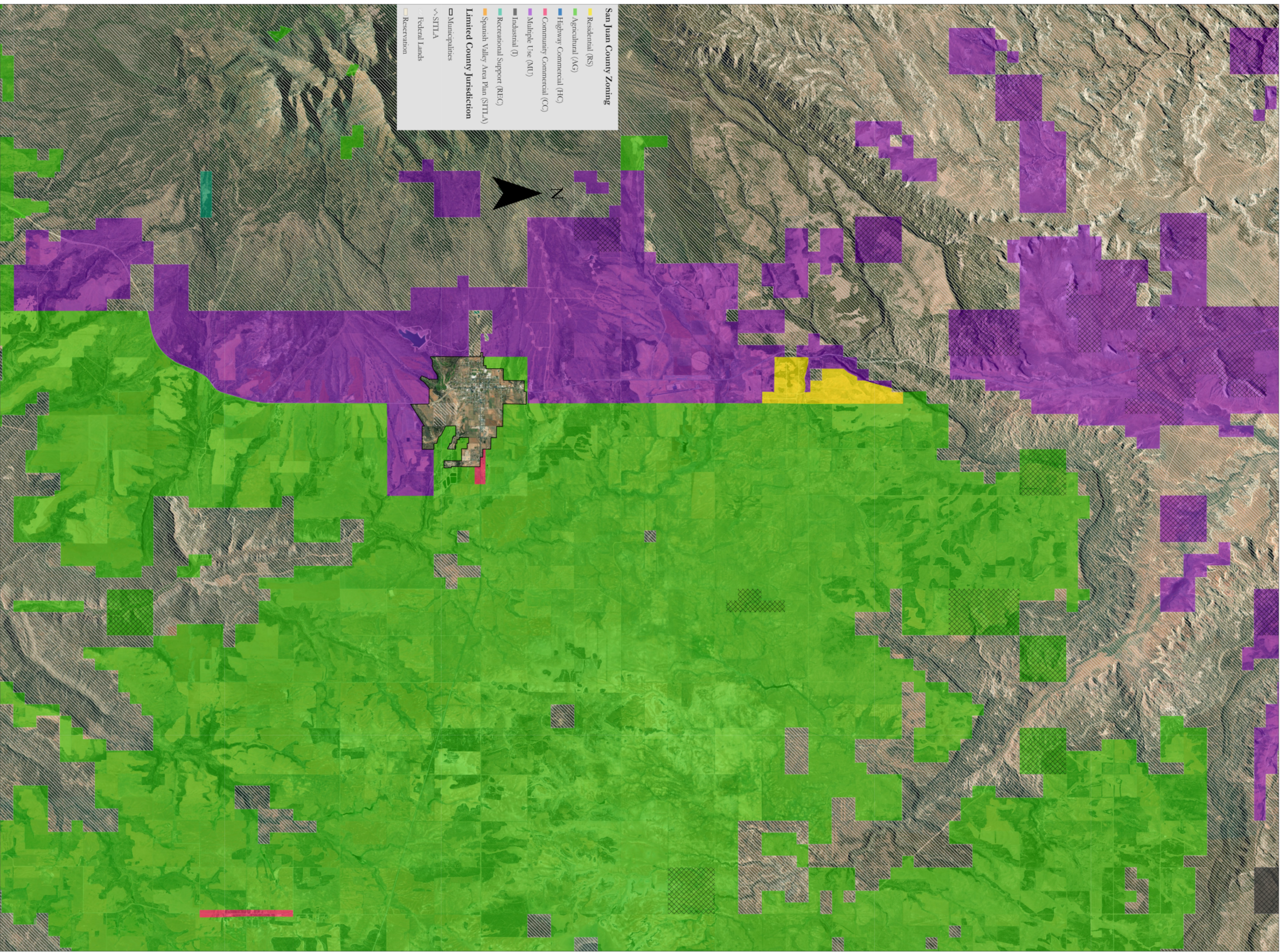
San Juan County Zoning

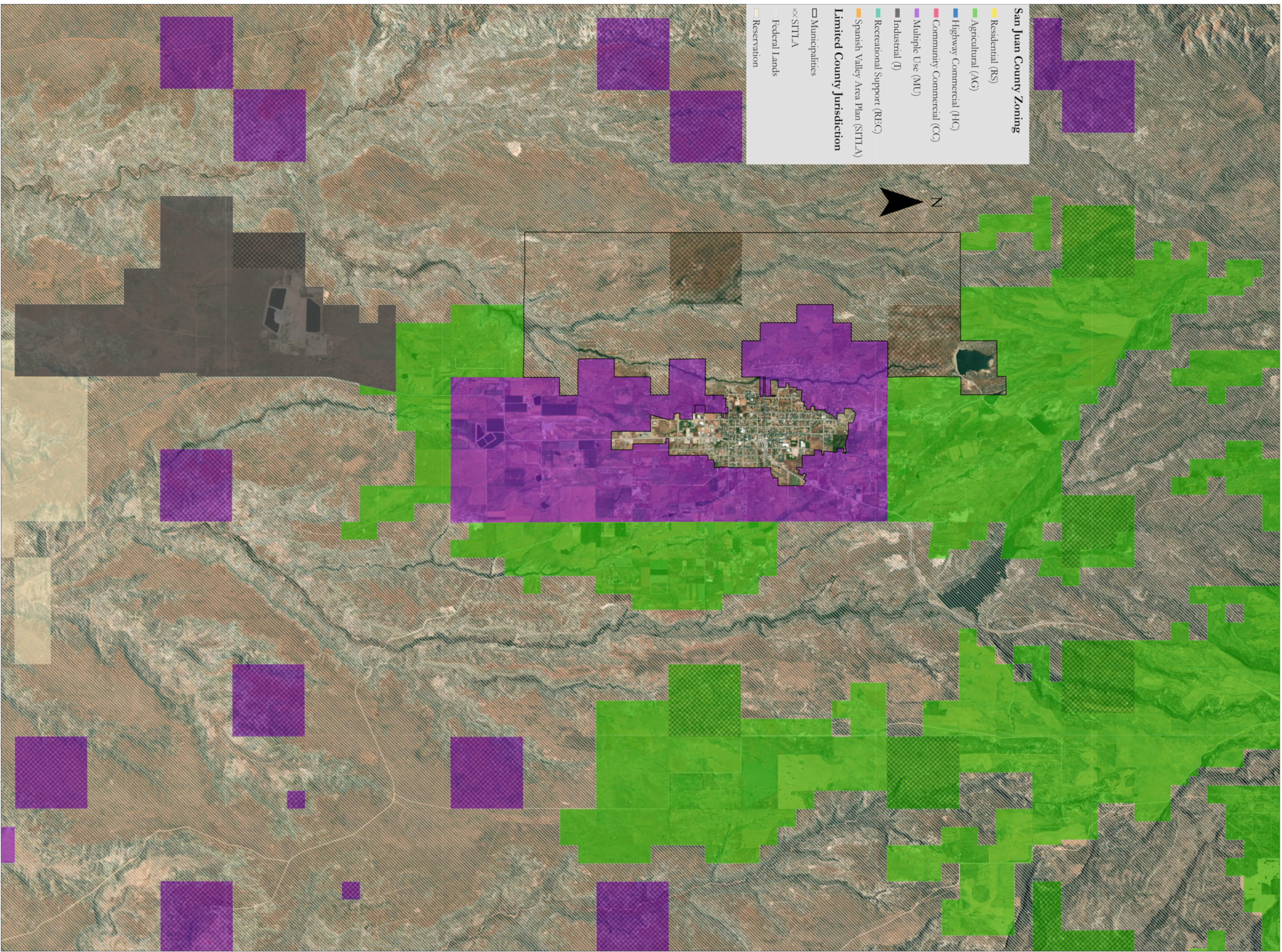
- Residential (RS)
- Agricultural (AG)
- Highway Commercial (HC)
- Community Commercial (CC)
- Multiple Use (MU)
- Industrial (I)
- Recreational Support (REC)
- Spanish Valley Area Plan (SITLA)

Limited County Jurisdiction

- Municipalities
- SITLA
- Federal Lands
- Reservation



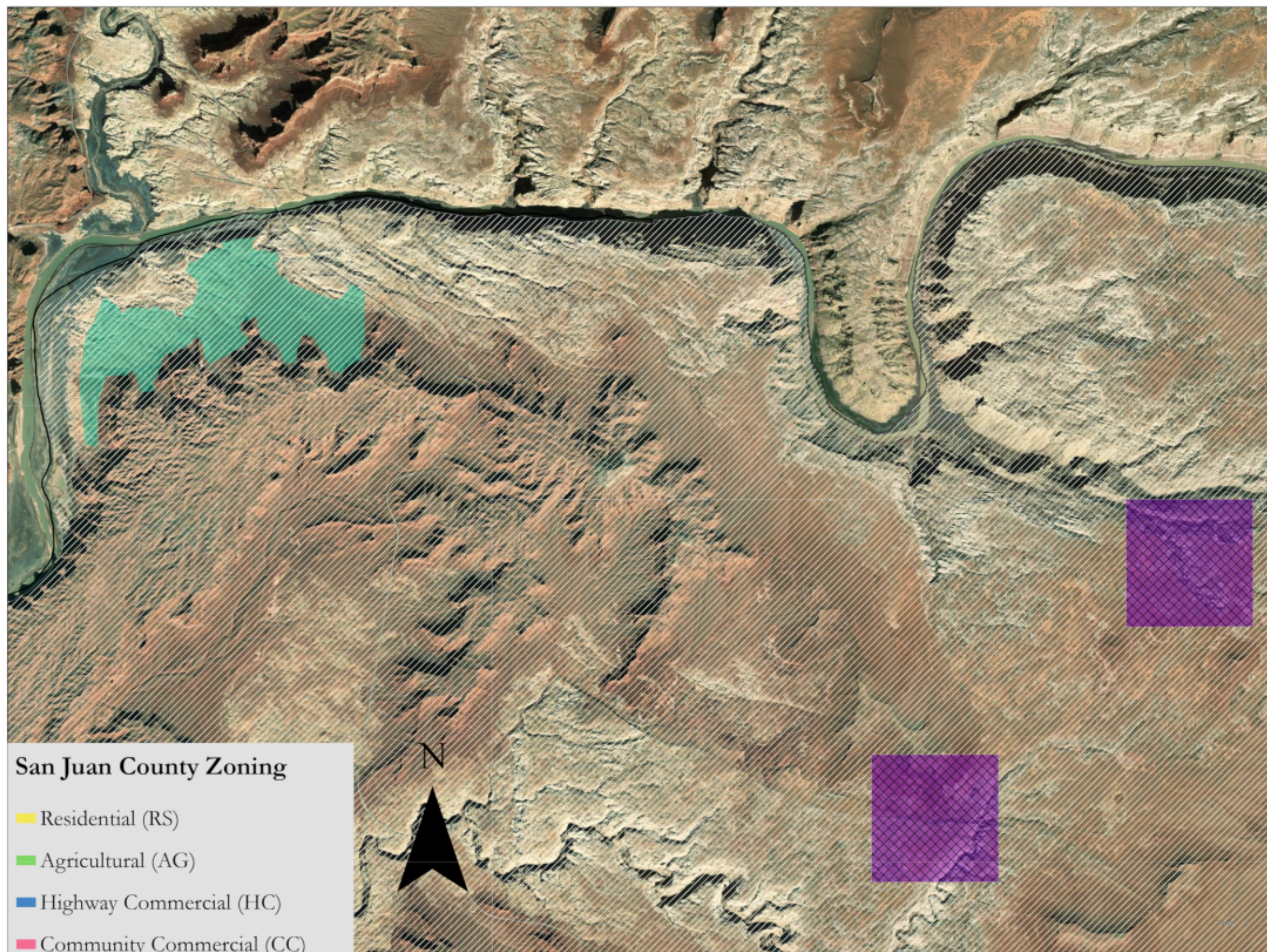




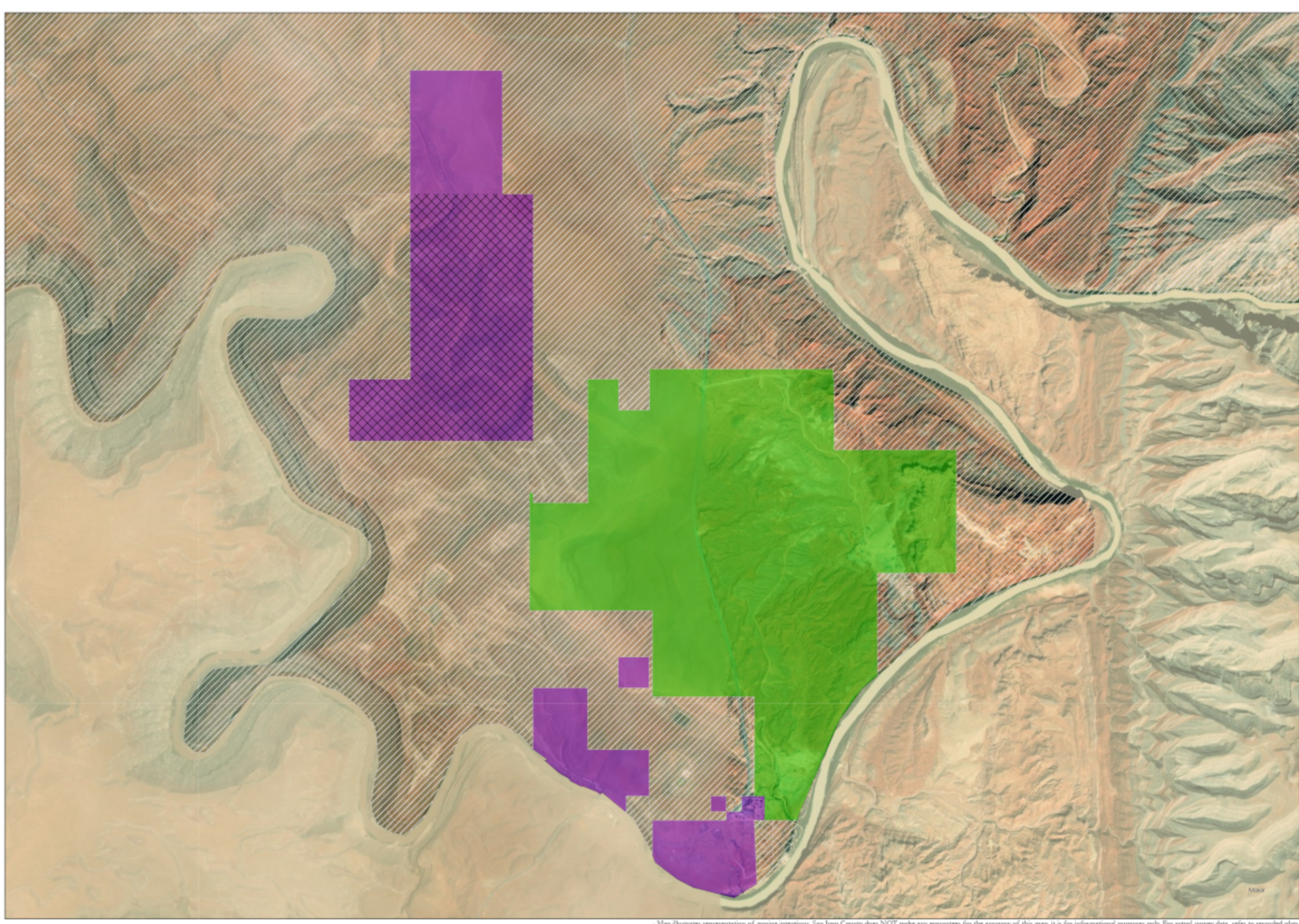
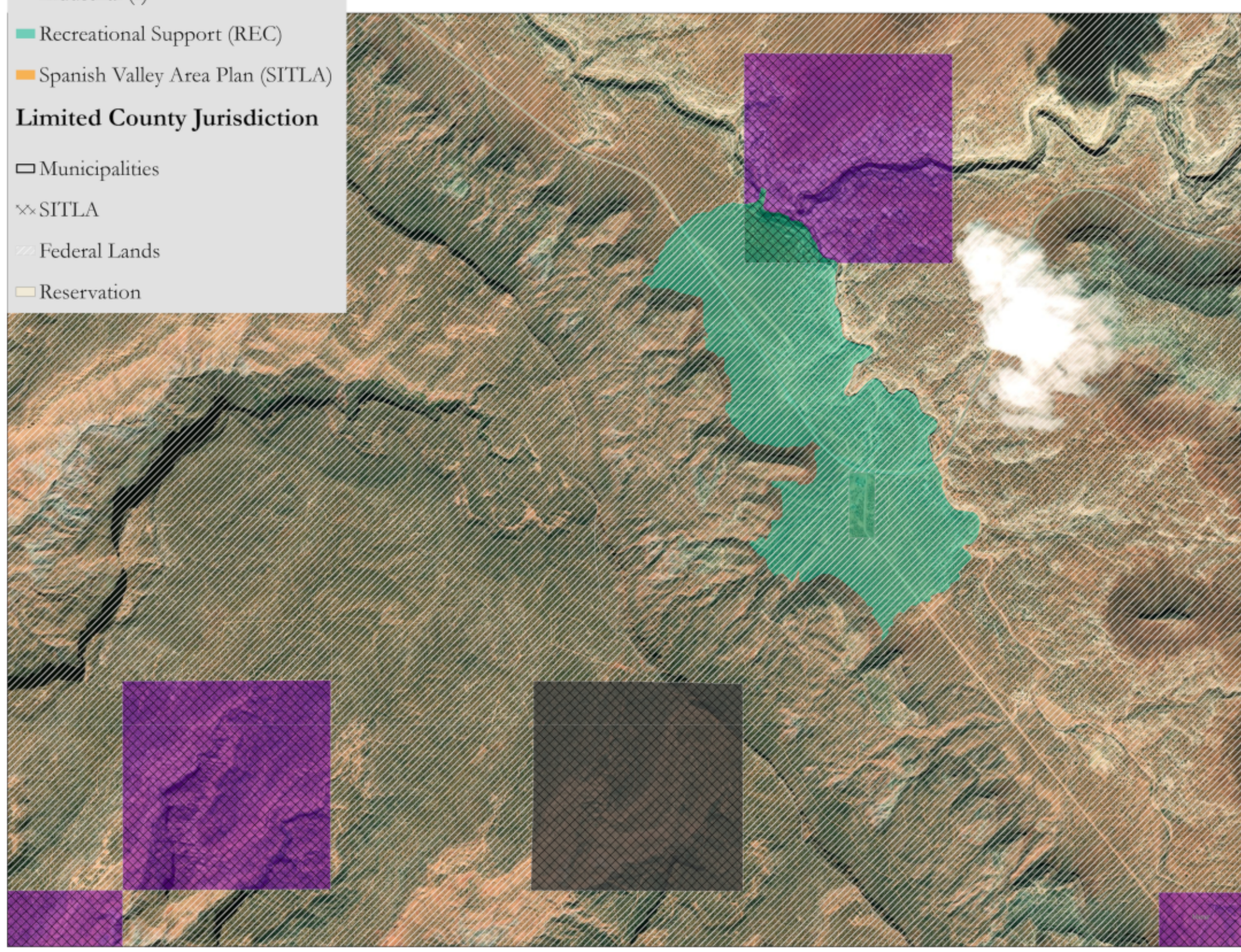
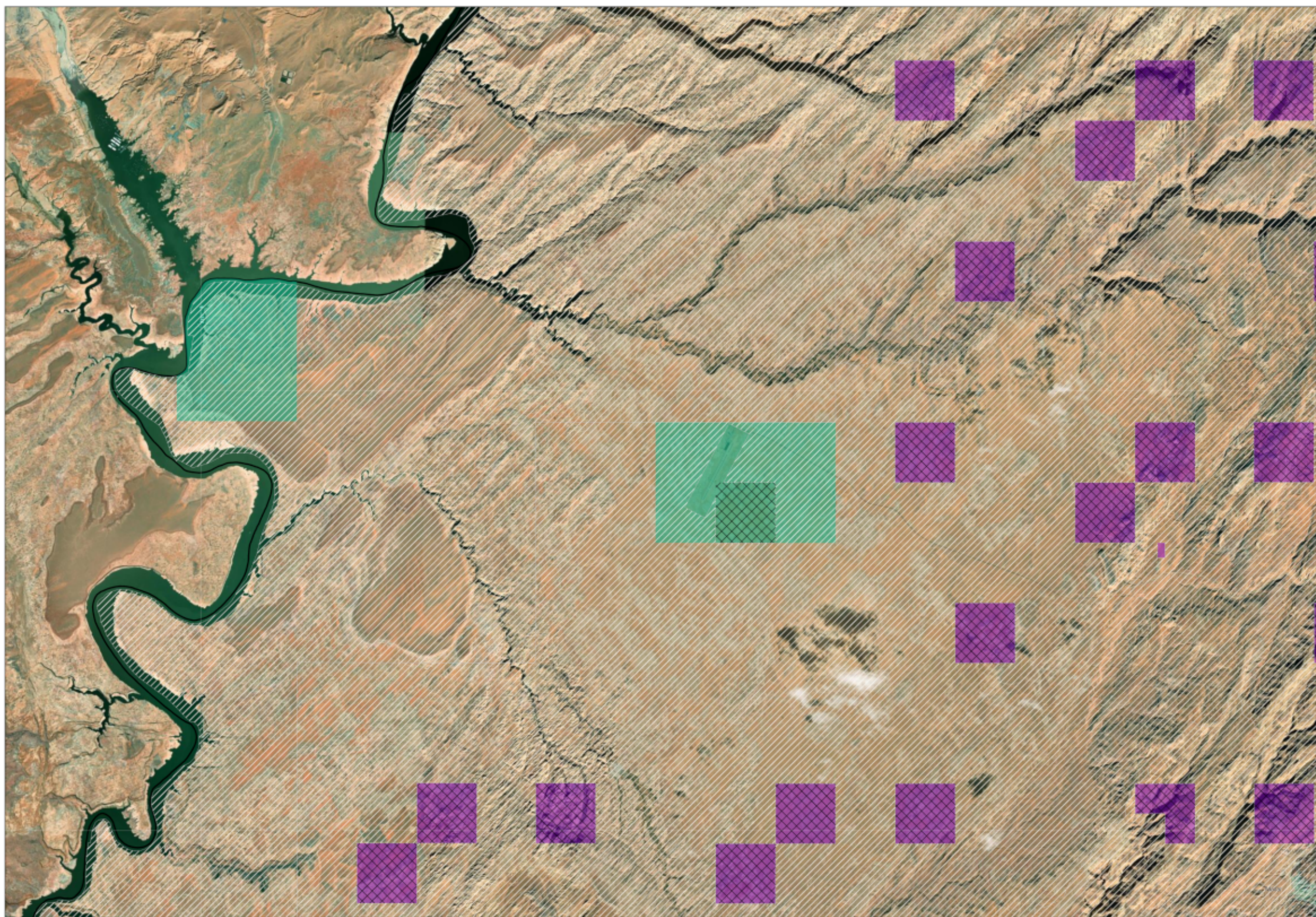
San Juan County Zoning

- Residential (RS)
 - Agricultural (AG)
 - Highway Commercial (HC)
 - Community Commercial (CC)
 - Multiple Use (MU)
 - Industrial (I)
 - Recreational Support (REC)
 - Spanish Valley Area Plan (SITLA)
- Limited County Jurisdiction**
- Municipalities
 - SITLA
 - Federal Lands
 - Reservation





- San Juan County Zoning**
- Residential (RS)
 - Agricultural (AG)
 - Highway Commercial (HC)
 - Community Commercial (CC)
 - Multiple Use (MU)
 - Industrial (I)
 - Recreational Support (REC)
 - Spanish Valley Area Plan (SITLA)
- Limited County Jurisdiction**
- Municipalities
 - ×× SITLA
 - ▨ Federal Lands
 - Reservation



Map illustrates representation of zoning attributes. San Juan County does NOT make any guarantee for the accuracy of this map, it is for informational purposes only. For actual survey data, refer to recorded plans. Map is property of and maintained by San Juan County. Imagery is property of and courtesy of Bing.